

KROY SIGN SYSTEMS LLC

STATE OF CALIFORNIA ACCESS COMPLIANCE SIGNS AND IDENTIFICATION

INTRODUCTION

Title 24 of the California Code of Regulations, known as the California Building Standard Code or simply “**Title 24**” contains the regulations that govern the construction of buildings in California.

Title 24 consists of twelve (12) parts. These parts are categorized as follows:

Part 1	California Building Standards Administrative Code
Part 2	California Building Code
Part 3	California Electrical Code
Part 4	California Mechanical Code
Part 5	California Plumbing Code
Part 6	California Energy Code
Part 7	California Elevator Safety Construction Code
Part 8	California Historical Building Code
Part 9	California Fire Code
Part 10	California Code for Building Conservation
Part 11	Reserved
Part 12	California Reference Standards Code

Part 2 of the California Building Code (**CBC**) contains general building design and construction requirements relating to fire and life safety, structural safety, and access compliance. Provisions of the CBC have been divided into a (3) three-volume set as follows:

Volume 1

Contains administrative, fire and life safety, accessibility and non-structural provisions

Volume 2

Contains structural engineering design and inspection provisions.

Volume 3

Contains material, testing and installation standards

The Division of the State Architect, Access Compliance (**DSA-AC**) promulgates building regulations for making buildings, structures, sidewalks, curbs and related facilities accessible to and useable by persons with disabilities. Access compliance regulations are applicable to:

- 1) Publicly funded buildings, structures, sidewalks, curbs and related facilities.
- 2) Privately funded public accommodations and commercial facilities
- 3) Public housing and private housing available for public use statewide

RESOLUTION

The California Legislature resolved that all designers and manufactures of Braille tactile signage that contract with the State of California shall comply with the CBC when designing, developing, manufacturing or implementing Braille tactile signage: and be it further resolved, that all agencies of the State of California shall comply with the CBC when designing, developing, manufacturing, or implementing Braille tactile signage

California contracted “Grade II Braille” shall be used whenever Braille symbols are specifically required. This “shorthand” form of Braille uses one or more Braille cells to correspond with groups of letters and or whole words. The spacing between cells is specific to California and significantly different from ADA “Grade II Braille”.

CALIFORNIA ACCESS COMPLIANCE

1127A.7 Signs

1127A.7.1 General

All accessible toilet and bathing facilities shall be identified by the “International Symbol of Accessibility.” Signs need not be provided for facilities within a dwelling unit or guestroom.

1127A.7.2 Identification Symbols

Doorways leading to men’s sanitary facilities shall be identified by an equilateral Triangle ¼” inch thick with edges 12” inches long and a vertex pointing upward.



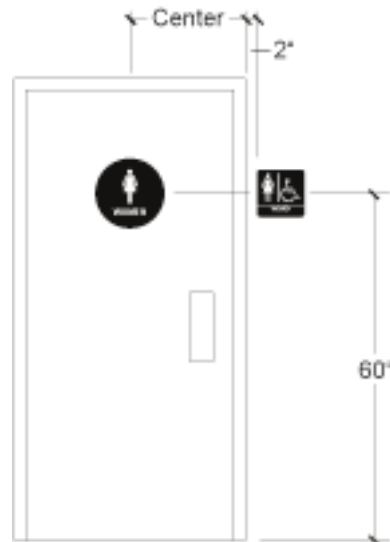
Women’s sanitary facilities shall be identified by a Circle, ¼” inch thick and 12” inches in diameter



Unisex sanitary facilities shall be identified by a Circle ¼” thick, 12” inches in diameter with a ¼” thick Triangle superimposed on the circle and within the 12” inch diameter.



These geometric symbols shall be centered on the door at the height of 60” inches and their color and contrast shall be distinctly different from the color and contrast of the door.



1117B.5 Signs and Identification

California’s standards for signage are more stringent and are significantly larger and wider than Federal law, American with Disabilities Act (ADA), Section 4.30

1117B.5.1 General.

When new or additional signs and/or identification devices are provided, or when existing signs and/or identification devices are replaced or altered, the new or altered signs and/or identification devices shall comply with Section 1117B.5

1117B.5.2 Finish and Contrast

Characters, symbols and their background shall have a non-glare finish. Either light on a dark background or dark on a light background

1117B.5.3 Proportions

Characters on signs shall have a width to height ratio of between 3:5 and 1:1 and a stroke width-to-height ratio of between 1:5 and 1:10

1117B.5.4 Character Height

Characters and numbers on signs shall be sized according to the viewing distance from which they are to be read. The minimum height is measured using an uppercase X. Lowercase characters are permitted.

For signs suspended or projected above the finished floor, the minimum character height shall be 3" inches.

1117B.5.5 Raised Characters and Pictorial Symbol Signs

When raised characters are required or when pictorial symbols (pictograms) are used on such signs, they shall conform to the following requirements:

Character Type: Characters on signs shall be raised 1/32 "inch minimum and shall be sans serif UPPERCASE characters accompanied by Grade II Braille

Character Size: Raised characters shall be a minimum of 5/8" inch and a maximum of 2" inches height.

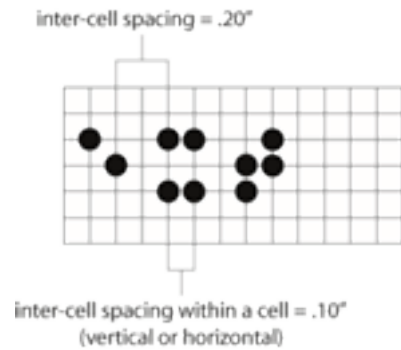
Pictorial Symbol Signs: Pictorial symbol signs (Pictograms) shall be accompanied by the verbal description placed directly below the pictogram. The outside dimension of the pictogram field shall be a minimum of 6" inches.

Character Placement: Characters and Braille shall be in a horizontal format. Braille shall be placed a minimum of 3/8" inch and a maximum of 1/2" inch directly below the tactile characters; flush left or centered.

When tactile text is multi-lined, all Braille shall be placed together below all lines of tactile text.

1117B.5.6 Braille

Contracted Grade II Braille shall be used whenever Braille is required in other portions of these standards. Dots shall be 1/10"th inch on centers in each cell with a 2/10th inch space between cells, measured from the second column of dots in the first cell to the first column of dots in the second cell. Dots shall be a raised a minimum of 1/40th (0.025) inch above the background.



Braille dots shall be domed or rounded.



1117B.5.7 Mounting Height and Location

Where permanent identification signs are provided for rooms and spaces, signs shall be installed on the wall adjacent to the latch side of the door.

Where there is no wall space on the latch side, including at double leaf doors, signs shall be placed on the nearest adjacent wall, preferably on the right.

Mounting height shall be 60 inches above the finished floor to the center of the line of the sign.

1117B.5.8 Symbols of Accessibility

The International Symbol of Accessibility shall be the standard used to identify facilities that are accessible to and useable by physically disabled persons as set forth in these building standards and as specifically required in this section.

EXCEPTION: Signs need not be provided for facilities within an adaptable dwelling unit, or within an accessible patient or guest room.

Color of Symbol

The symbol specified above shall consist of a white figure on a blue background. The blue shall be equal to the Color No. 15090 in the Federal Standard 595B.

EXCEPTION: The appropriate enforcement agency may approve other colors to complement décor or unique design. The symbol contrast shall be light on dark or dark on light.

Entrance Signs

All building and facility entrances that are accessible to a useable by persons with disabilities shall be identified with a minimum of one (1) International Symbol of Accessibility sign and with additional directional signs.

Entrances that are not accessible shall have directional signage.

International TTY Symbol

Where required, the International TTY Symbol shall comply

Volume Control Telephones

Where telephones with volume controls are required, the identification symbol shall be a telephone handset with radiating sound waves.

Assistive Listening Systems

Where assistive listening systems are required, the International Symbol of Access Hearing Loss shall comply.

Signs for Text Telephones

Whenever signs shall refer to text telephones for people who are deaf or hard of hearing, the term "TTY" shall be used: the term "TDD" shall not be used.

Cleaner Air Symbol

This symbol shall be the standard used to identify a room, facility and paths of travel that are accessible to and useable by people who are adversely impacted by airborne chemicals or particulates.

The symbol shall include the text "Cleaner Air" as shown and shall be displayed either as a negative or positive image with 70% contrast and within minimum six 6" inch square. The symbol may be in black and white or in color. When color is used it shall be Blue on white or White on blue. The blue shall be equal to the Color No. 15090 in the Federal Standard 595B.